

User guide

# FLIR UVMS CCTV Keyboard

## DVT-KBD-G2

---



---

© 2018 FLIR Systems, Inc. All rights reserved worldwide. No parts of this manual, in whole or in part, may be copied, photocopied, translated, or transmitted to any electronic medium or machine readable form without the prior written permission of FLIR Systems, Inc.

Names and marks appearing on the products herein are either registered trademarks or trademarks of FLIR Systems, Inc. and/or its subsidiaries. All other trademarks, trade names, or company names referenced herein are used for identification only and are the property of their respective owners. This product is protected by patents, design patents, patents pending, or design patents pending. The contents of this document are subject to change.

FLIR Systems, Inc.  
6769 Hollister Avenue  
Goleta, California 93117  
USA  
Phone: 888.747.FLIR (888.747.3547)  
International: +1.805.964.9797

For technical assistance, please call us at +1.888.388.3577 or visit the Service & Support page at [www.flir.com/security](http://www.flir.com/security).

Important Instructions and Notices to the User:

Modification of this device without the express authorization of FLIR Commercial Systems, Inc. may void the user's authority under FCC rules to operate this device.

---

# Table of Contents

<b>1. Important Safeguards</b> .....	<b>1</b>
1.1 General Precautions .....	1
1.2 Installation .....	1
1.3 Service .....	3
1.4 Use .....	3
<b>2. FLIR UVMS Keyboard Features</b> .....	<b>5</b>
<b>3. Getting Started</b> .....	<b>6</b>
<b>4. FLIR UVMS Keyboard Overview</b> .....	<b>7</b>
4.1 Default Username and Password .....	7
4.2 Keyboard Ports .....	7
4.3 Front Panel & Buttons .....	7
4.3.1 Keyboard Commands .....	8
4.3.2 PTZ Controls .....	9
4.3.3 Instant Replay Commands .....	9
<b>5. Basic Setup</b> .....	<b>10</b>
5.1 Start Up .....	10
5.2 Connecting to a client machine using RS232 .....	10
5.3 Finding RS232 Information on UVMS .....	10
<b>6. Keyboard Menu</b> .....	<b>13</b>
6.1 Navigating the Menu .....	13
6.2 System .....	13
6.2.1 Time .....	13
6.2.2 AUX .....	13
6.3 Account .....	14
6.3.1 Modify PW .....	14
6.3.2 Add User .....	14
6.3.3 Delete User .....	15
6.3.4 Modify Rights .....	15
6.4 Config (Resetting to Factory Defaults) .....	15
6.5 Info .....	16
6.6 Model .....	16
6.7 Menu Tree Overview .....	17
<b>7. System Specifications</b> .....	<b>18</b>
7.1 Dimensions .....	19
<b>8. Notices</b> .....	<b>20</b>

# Table of Contents

8.1	FCC Class A Notice .....	20
-----	--------------------------	----



# 1 Important Safeguards

In addition to the careful attention devoted to quality standards in the manufacturing process of your product, safety is a major factor in the design of every instrument. However, safety is your responsibility too. This sheet lists important information that will help to ensure your enjoyment and proper use of the product and accessory equipment. Please read them carefully before operating and using your product.

## 1.1 General Precautions

1. All warnings and instructions in this manual should be followed.
2. Remove the plug from the outlet before cleaning. Do not use liquid aerosol detergents. Use a water-dampened cloth for cleaning.
3. Do not use this product in humid or wet places.
4. Keep enough space around the product for ventilation. Slots and openings in the storage cabinet should not be blocked.
5. It is highly recommended to connect the product to a surge protector to protect from damage caused by electrical surges. It is also recommended to connect the product to an uninterruptible power supply (UPS), which has an internal battery that will keep the product running in the event of a power outage.



Maintain electrical safety. Power line operated equipment or accessories connected to this product should bear the UL listing mark or CSA certification mark on the accessory itself and should not be modified so as to defeat the safety features. This will help avoid any potential hazard from electrical shock or fire. If in doubt, contact qualified service personnel.

## 1.2 Installation

1. **Read and Follow Instructions** - All the safety and operating instructions should be read before the product is operated. Follow all operating instructions.
2. **Retain Instructions** - The safety and operating instructions should be retained for future reference.
3. **Heed Warnings** - Comply with all warnings on the product and in the operating instructions.
4. **Polarization** - Do not defeat the safety purpose of the polarized or grounding-type plug. A polarized plug has two blades with one wider than the other.



A grounding type plug has two blades and a third grounding prong.



The wide blade or the third prong are provided for your safety.

If the provided plug does not fit into your outlet, consult an electrician for replacement of the obsolete outlet.

5. **Power Sources** - This product should be operated only from the type of power source indicated on the marking label. If you are not sure of the type of power supplied to your location, consult your video dealer or local power company. For products intended to operate from battery power, or other sources, refer to the operating instructions.
6. **Overloading** - Do not overload wall outlets or extension cords as this can result in the risk of fire or electric shock. Overloaded AC outlets, extension cords, frayed power cords, damaged or cracked wire insulation, and broken plugs are dangerous. They may result in a shock or fire hazard. Periodically examine the cord, and if its appearance indicates damage or deteriorated insulation, have it replaced by your service technician.
7. **Power-Cord Protection** - Power supply cords should be routed so that they are not likely to be walked on or pinched by items placed upon or against them. Pay particular attention to cords at plugs, convenience receptacles, and the point where they exit from the product.
8. **Surge Protectors** - It is highly recommended that the product be connected to a surge protector. Doing so will protect the product from damage caused by power surges. Surge protectors should bear the UL listing mark or CSA certification mark.
9. **Uninterruptible Power Supplies (UPS)** - Because this product is designed for continuous, 24/7 operation, it is recommended that you connect the product to an uninterruptible power supply. An uninterruptible power supply has an internal battery that will keep the product running in the event of a power outage. Uninterruptible power supplies should bear the UL listing mark or CSA certification mark.
10. **Ventilation** - Slots and openings in the case are provided for ventilation to ensure reliable operation of the product and to protect it from overheating. These openings must not be blocked or covered. The openings should never be blocked by placing the product on a bed, sofa, rug, or other similar surface. This product should never be placed near or over a radiator or heat register. This product should not be placed in a built-in installation such as a bookcase or rack unless proper ventilation is provided and the product manufacturer's instructions have been followed.
11. **Attachments** - Do not use attachments unless recommended by the product manufacturer as they may cause a hazard.
12. **Water and Moisture** - Do not use this product near water — for example, near a bath tub, wash bowl, kitchen sink or laundry tub, in a wet basement, near a swimming pool and the like.
13. **Heat** - The product should be situated away from heat sources such as radiators, heat registers, stoves, or other products (including amplifiers) that produce heat.

- 
14. **Accessories** - Do not place this product on an unstable cart, stand, tripod, or table. The product may fall, causing serious damage to the product. Use this product only with a cart, stand, tripod, bracket, or table recommended by the manufacturer or sold with the product. Any mounting of the product should follow the manufacturer's instructions and use a mounting accessory recommended by the manufacturer.



15. **Camera Extension Cables** – Check the rating of your extension cable(s) to verify compliance with your local authority regulations prior to installation.
16. **Mounting** - The cameras provided with this system should be mounted only as instructed in this guide or the instructions that came with your cameras, using the provided mounting brackets.
17. **Camera Installation** - Cameras are not intended for submersion in water. Not all cameras can be installed outdoors. Check your camera environmental rating to confirm if they can be installed outdoors. When

### 1.3 Service

1. **Servicing** - Do not attempt to service this product yourself, as opening or removing covers may expose you to dangerous voltage or other hazards.

Refer all servicing to qualified service personnel.

2. **Conditions Requiring Service** - Unplug this product from the wall outlet and refer servicing to qualified service personnel under the following conditions:
- When the power supply cord or plug is damaged.
  - If liquid has been spilled or objects have fallen into the product.
  - If the product has been exposed to rain or water.
  - If the product has been dropped or the cabinet has been damaged
  - If the product does not operate normally by following the operating instructions. Adjust only those controls that are covered by the operating instructions. Improper adjustment of other controls may result in damage and will often require extensive work by a qualified technician to restore the product to its normal operation.
  - When the product exhibits a distinct change in performance. This indicates a need for service.
3. **Replacement Parts** - When replacement parts are required, have the service technician verify that the replacements used have the same safety characteristics as the original parts. Use of replacements specified by the product manufacturer can prevent fire, electric shock, or other hazards.
4. **Safety Check** - Upon completion of any service or repairs to this product, ask the service technician to perform safety checks recommended by the manufacturer to determine that the product is in safe operating condition.

### 1.4 Use

1. **Cleaning** - Unplug the product from the wall outlet before cleaning. Do not use liquid cleaners or aerosol cleaners. Use a damp cloth for cleaning.
2. **Product and Cart Combination** - When product is installed on a cart, product and cart combination should be moved with care. Quick stops, excessive force, and uneven surfaces may cause the product and cart combination to overturn.

3. **Object and Liquid Entry** - Never push objects of any kind into this product through openings as they may touch dangerous voltage points or “short-out” parts that could result in a fire or electric shock. Never spill liquid of any kind on the product.
4. **Lightning** - For added protection of this product during a lightning storm, or when it is left unattended and unused for long periods of time, unplug it from the wall outlet and disconnect the antenna or cable system. This will prevent damage to the product due to lightning and power line surges.

## 2 FLIR UVMS Keyboard Features



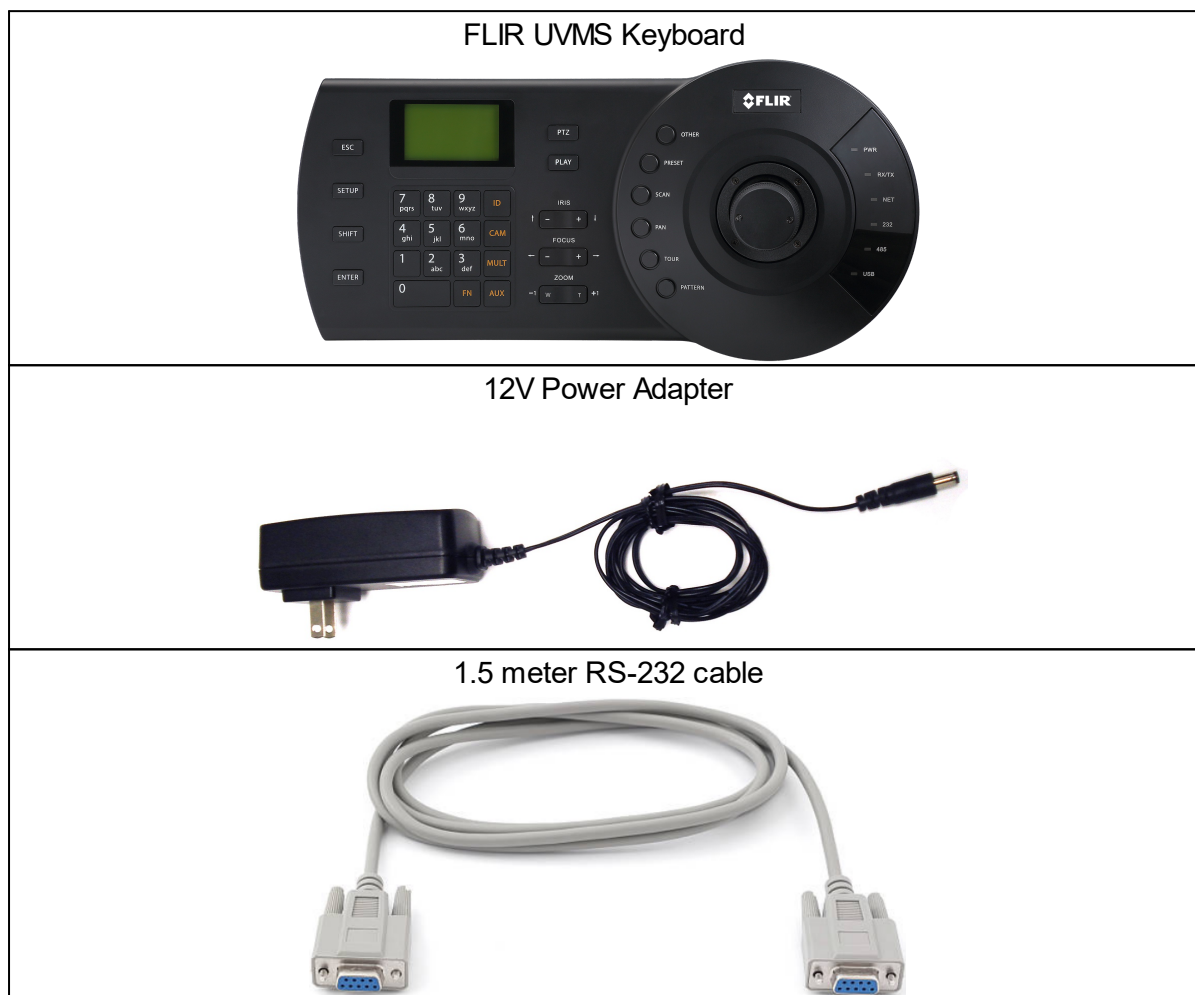
- Manage FLIR UVMS (Latitude, Horizon and Meridian).
- Access multiple devices using the same keyboard.
- RS232 supported.

**Note**

Please visit <http://www.flir.com/security/> for information, firmware, and compatibility updates

## 3 Getting Started

The System comes with the following components:



## 4 FLIR UVMS Keyboard Overview

The keyboard has the following user account by default:

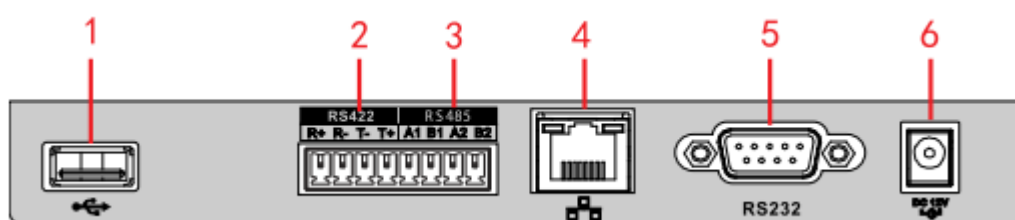
**admin:** can access all functions. Default password is 000000.

### 4.1 Default Username and Password

The keyboard has the following user account by default:

**admin:** can access all functions. Default password is 000000.

### 4.2 Keyboard Ports



1. **USB:** Not supported.
2. **RS422:** Not supported.
3. **RS485:** Not supported.
4. **Ethernet:** Not supported.
5. **RS232:** Used for RS232 connections
6. **DC12V:** Connect the power adapter to power the keyboard.

### 4.3 Front Panel & Buttons



**Note:** The SHIFT button works as a toggle button for other buttons on the keyboard. When SHIFT is used to trigger a function, it remains in the SHIFT state until the button is used again to toggle back to the previous mode.

### 4.3.1 Keyboard Commands

Function	Keyboard Command	Key
Select a Control Center Monitor	<i>Monitor Number</i> → MULT	8
Select a View tile	<i>Monitor Number</i> → MULT	8
Display a camera on the selected monitor or tile	<i>Tile Number</i> → CAM	7
Toggle through viewing pane layouts with 4 tiles	2 → SETUP	2
Toggle through viewing pane layouts with 9 tiles	3 → SETUP	2
Toggle through viewing pane layouts with 16 tiles	4 → SETUP	2
Expand currently selected tile to fill viewing pane	MULT	8
Clear currently selected tile	SHIFT → CAM	3+7
Display a sequence on the selected monitor or tile	<i>Sequence number</i> → TOUR	19
Pause Sequence	TOUR	19
Switch to next camera of a <i>paused</i> sequence	SHIFT → FOCUS+	3+13
Switch to previous camera of a <i>paused</i> sequence	SHIFT → FOCUS-	3+13
Turn recording of the selected camera's video stream on/off	SCAN	17
Audio PTT	OTHER	15
Audio Listen	SHIFT → OTHER (enabled by default)	3+15
Trigger an alarm	<i>Alarm Number</i> → PAN	18
Acknowledge alarm <i>in its active tile</i>	SHIFT → PAN	3+18
Full Screen	11 → FN	11+5
Display CC Help File	1 → FN	1+5



### 4.3.2 PTZ Controls

**Note:** Entering the PTZ menu, by pressing the PTZ Button (10) will display a menu with options that are listed below under *Keyboard commands* as **PTZ**. To learn more about navigating the menu, see the section titled [Navigating the Menu](#).

```

PTZ
HOME
LOCK: OFF
FLIP

```

Function	Keyboard Command	Key
Pan left/right	Joystick left/right	21
Tilt up/down	Joystick up/down	21
Zoom in/out	ZOOM +/-	21
PTZ preset	<i>Preset Number</i> → PRESET	16
PTZ Pattern	<i>Pattern Number</i> → PATTERN	20
Send to 'home' position	PTZ	10
Lock/unlock	PTZ	10
Flip position	PTZ	10
Control Iris	IRIS +/-	12
Focus	FOCUS +/-	13
Auxiliary controls ON	<i>AUX Number</i> → AUX	9
Auxiliary controls OFF	<i>AUX Number</i> → SHIFT → AUX	3+9

### 4.3.3 Instant Replay Commands

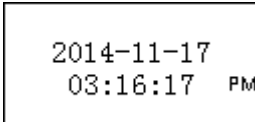
**Note:** Moving the joystick will pause the video. Once paused, moving the joystick to the left or right will move the playback needle, in order to jump to time within the time-line. When a desired spot is determined, press PLAY to continue watching.

Function	Keyboard Command	Key
Display Instant replay on next available tile	PLAY	11
Play	IRIS +	12
Pause	IRIS -	12
Rewind	FOCUS - or joystick left	13/21
Fast Forward	FOCUS + or joystick right	13/21
Bookmark the selected tile	SHIFT+SCAN	2+17

## 5 Basic Setup

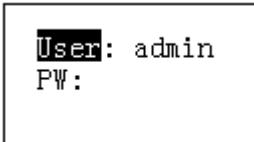
### 5.1 Start Up

1. Connect the included power adapter to the keyboard and to a power outlet or surge protector.
2. When the keyboard starts up it will show the current date and time on the display. Press **ID** to enter the sign in screen.



```
2014-11-17
03:16:17 PM
```

3. Move the joystick down to highlight **PW**. Enter the admin password (default: **000000**). Press **ENTER** to log into the keyboard.



```
User: admin
PW:
```

4. Request to enter **ID** will be shown. Default **ID** '0' will be shown. Press **ENTER** to complete login.

### 5.2 Connecting to a client machine using RS232

You can use the User guide to control the UVMS United Control Center via an RS232 serial connection.

#### Note

To find the RS232 connection information in the UVMS, [Finding RS232 Connection Information in UVMS United Control Center](#)

1. Connect the RS232 cable from the keyboard to the back of the client PC.
2. Plug in the keyboard to power it on.
3. Press **ID** to open the menu. Select the admin user and enter the password (default: **000000**) under **PW**.
4. Request to enter **ID** will be shown. Default **ID** '0' will be shown. Press **ENTER** to complete login.

The keyboard will connect to the device

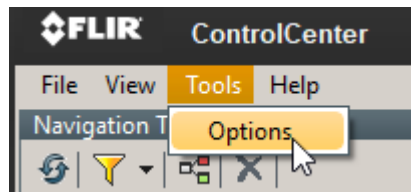
### 5.3 Finding RS232 Information on UVMS

When connecting to the UVMS United Control Center, the address settings are pre-defined in the keyboard and does not require such configuration in the Control Center setting.

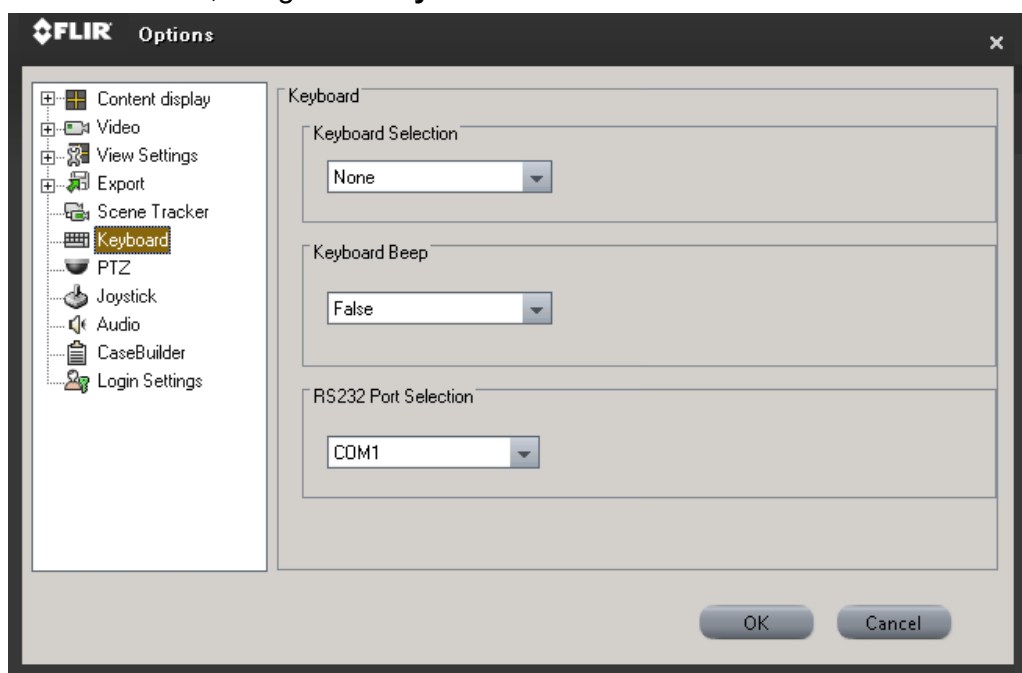
The following steps are required to allow the Control Center to recognize the keyboard:

Open Control Center on the client machine of which you plan to connect the FLIR Keyboard via RS232

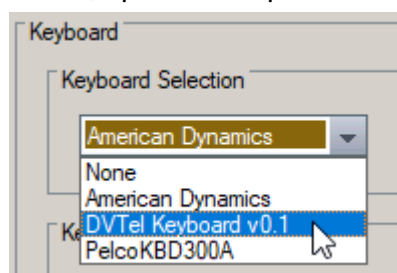
1. At the top of the screen, on the application Menu, click Tools > Options



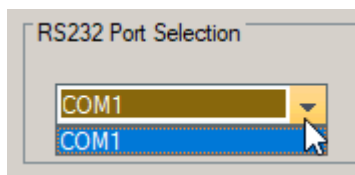
2. On the left hand side, navigate to **Keyboard**



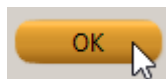
3. In the **Keyboard Selection** section, open the drop-down and select: DVTel Keyboard v0.1



4. In the **RS232 Port Selection** section, open the drop-down and select the appropriate computer port associated with the RS232 port of the local client machine



5. Click **OK**



## 6 Keyboard Menu

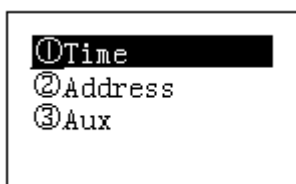
You can use the keyboard menu to configure the keyboard.

### 6.1 Navigating the Menu

- Move the joystick **UP** and **DOWN** to select items.
- Move the joystick **LEFT** and **RIGHT** to change parameters.
- Press the keyboard buttons to enter characters. Press **SHIFT** to change input types. Press **FOCUS—** to delete characters.
- Press **ENTER** to confirm selections or enter sub-menus.
- Press **ESC** to exit or go back.

### 6.2 System

The System menus allow you to configure keyboard settings. System menus are under **Menu Settings>System**.



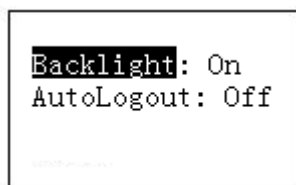
#### 6.2.1 Time

The Time menu lets you set the system time. Set the year, month, day, minute, and second. You can select 12 or 24 hour time under Mode. Press **ENTER** to save changes.



#### 6.2.2 AUX

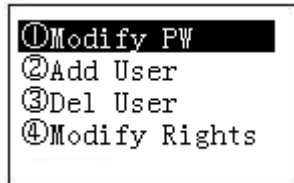
The AUX menu allows you to configure backlight and auto-logout.



- **Backlight:** Select **ON** to enable screen backlight or **OFF** to disable. Press **ENTER** to save changes.
- **AutoLogout:** Select **OFF** to disable auto-logout, or select auto-logout in 10 minutes (**10M**), 30 minutes (**30M**), or 60 minutes (**60M**). Press **ENTER** to save changes.

## 6.3 Account

The Account menus allow you to add, delete, or modify user accounts and passwords on the keyboard.



**Note:** You must be logged into the keyboard with the admin account to access this menu.

### 6.3.1 Modify PW

Modify PW allows you to change the password for a user account.

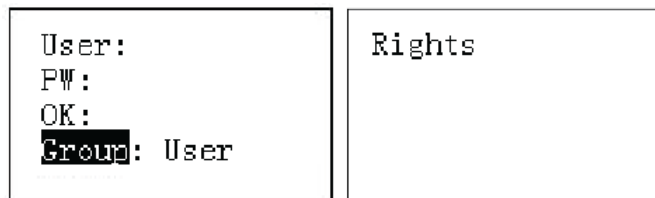


**To change an account password:**

1. Highlight User and press left/right on the joystick to select the user account.
2. Highlight PW and enter the new password for the user. It is recommended to enter a six digit password.
3. Highlight OK and confirm the password. Press ENTER to save the new password.

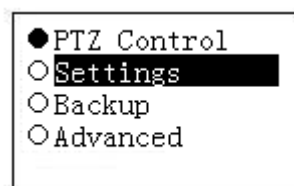
### 6.3.2 Add User

You can add additional user accounts to the keyboard



**To add additional user accounts:**

1. Highlight **User** and enter user name.
2. Highlight **PW** and enter account password. It is recommended to enter a six digit password.
3. Highlight **OK** and confirm the password.
4. Press down to highlight **Right** and press **ENTER** to configure user account rights. Press **LEFT/RIGHT** to enable/disable rights. Rights are enabled when the icon is filled (•) and disabled when the icon is empty (?). Press **ENTER** to confirm the rights and save the user account.



5. Press ENTER to save the user account.

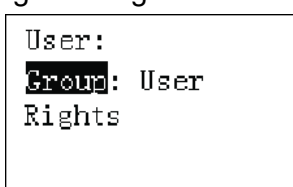
### 6.3.3 Delete User

Select a user account and press ENTER to delete the account.

**Note:** The admin account cannot be deleted

### 6.3.4 Modify Rights

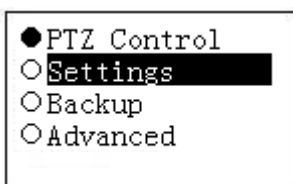
Modify Rights allows you to change rights assigned to user accounts you have created.



```
User:
Group: User
Rights
```

#### To modify rights:

1. Highlight **User** and select the user account you want to modify.
2. Press down to highlight **Right** and press **ENTER** to configure user account rights. Press left/right to enable/disable rights. Rights are enabled when the icon is filled (●) and disabled when the icon is empty (?). Press **ENTER** to confirm the rights and save the user account.

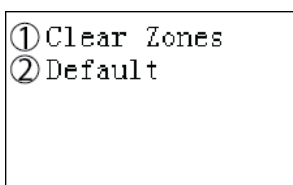


```
● PTZ Control
○ Settings
○ Backup
○ Advanced
```

3. Press **ENTER** to save changes.

## 6.4 Config (Resetting to Factory Defaults)

The Config menu allows you to clear all zones or reset the keyboard to factory default settings.



```
① Clear Zones
② Default
```

#### To clear zones:

1. Select **Clear Zones** and press **ENTER**.
2. Press **ENTER** again to confirm or **ESC** to cancel

#### To reset the keyboard to factory defaults:

1. Select **Default** and press **ENTER**.
2. Press **ENTER** again to confirm or **ESC** to cancel.

## 6.5 Info

The Version menu shows the current version of the keyboard firmware.

```
Version:
2.606.0024.0
Built Date:
2013-11-16
```

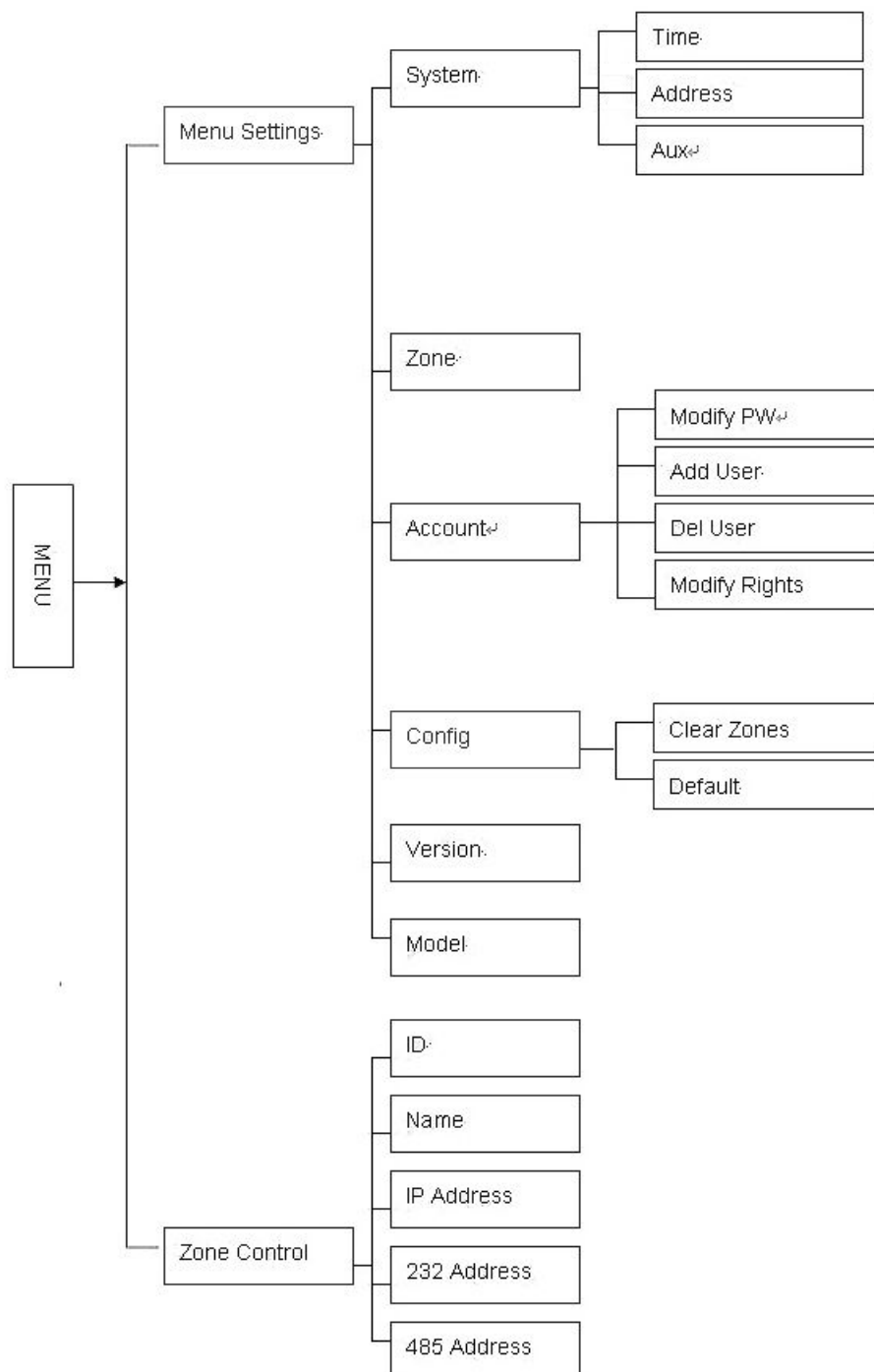
## 6.6 Model

The Model menu shows the model number of the keyboard.

```
Model:
DVT-KBD-G2
```



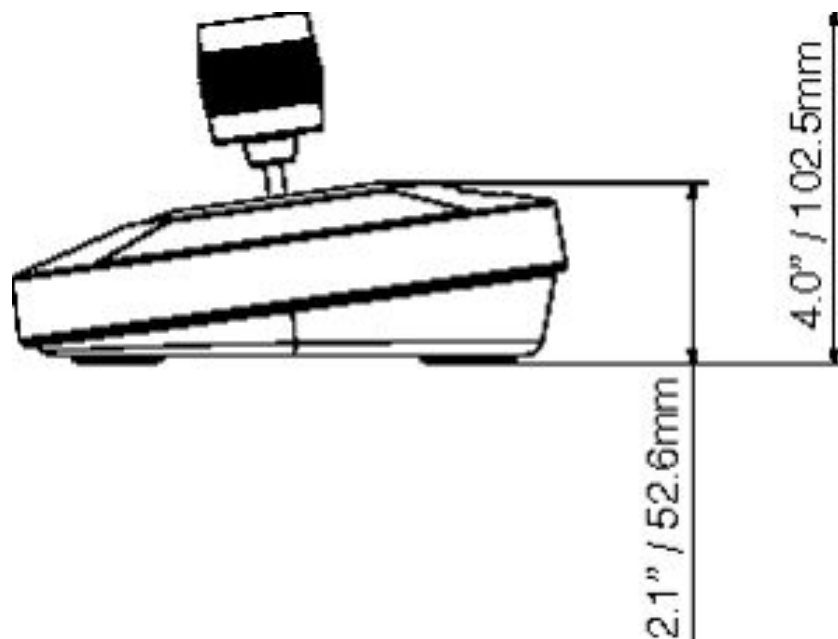
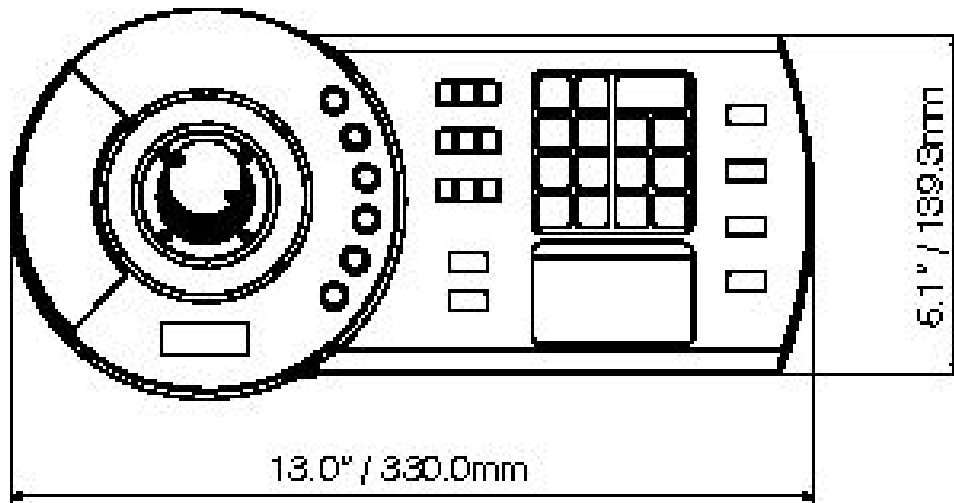
## 6.7 Menu Tree Overview



## 7 System Specifications

Compatibility	Latitude NVMS, Horizon/Meridian NVR
Keyboard Keypanel	Electromechanical
Joystick	3-axis, vector-solving, twisting, return to-center
Connectors	RS232
Display	LCD, 75.2mm x 33.85mm
Max User Accounts	1 Admin, 10 User
User Account Type	Admin, User
Power Supply	Input 100V ~240V 50Hz / 60Hz, Output 12V DC 1000mA
Power Consumption	Max 5W
Operating Temperature	-14~131°F / -10~55°C
Operating Humidity	<90%RH
Dimension	13.0" x 5.1" x 4.0" / 330mm x 139mm x 103mm
Weight	5.5lbs / 2.5Kg

## 7.1 Dimensions



As our products are subject to continuous improvement, FLIR Systems, Inc. and its subsidiaries reserve the right to modify product design, specifications, and prices without notice and without incurring any obligation. E&OE

## 8 Notices

This equipment has been certified and found to comply with the limits regulated by FCC, EMC, and LVD. Therefore, it is designated to provide reasonable protection against interference and will not cause interference with other appliance usage.

However, it is imperative that the user follows the guidelines in this manual to avoid improper usage which may result in damage to the unit, electrical shock and fire hazard injury.

In order to improve the feature functions and quality of this product, the specifications are subject to change without notice from time to time.

### 8.1 FCC Class A Notice

This equipment has been tested and found to comply with the limits for a Class A digital device pursuant to Part 15 of the FCC Rules. These limits are designed to provide reasonable protection against harmful interference when the equipment is operated in a commercial environment. This equipment generates, uses, and can radiate radio frequency energy and, if not installed and used in accordance with the manufacturer's instruction manual, may cause harmful interference with radio communications. Operation of this equipment in a residential area is likely to cause harmful interference, in which case you will be required to correct the interference at your own expense.



FLIR Systems, Inc.  
6769 Hollister Ave.  
Goleta, CA 93117  
USA  
PH: +1 805.964.9797  
PH: +1 877.773.3547 (Sales)  
PH: +1 888.747.3547 (Support)  
FX: +1 805.685.2711  
[www.flir.com/security](http://www.flir.com/security)

Corporate Headquarters  
FLIR Systems, Inc.  
27700 SW Parkway Ave.  
Wilsonville, OR 97070  
USA  
PH: +1 503.498.3547  
FX: +1 503.498.3153

Document:  
DVT-KBD-G2 FLIR UVMS CCTV Keyboard  
Version: 1.0  
Date: May 9, 2018  
Language: en-US